



INFORMATIONAL BROCHURE

Weld RE-5J School District is continuously expanding opportunities for students. Our Career and Technical Education (CTE) Pathways empower learners to discover their passions and talents through real-world experiences which connect learning to life. From elementary school through graduation day, Weld RE-5J students are preparing for success, wherever their dreams may take them:

- Whether that is through further training
 - College, Community College, Trade School
 - Degree
 - Industry Certificates
 - Apprenticeships
- Or by earning industry certificates in high school.

FOR FURTHER INFORMATION, CONTACT A CTE ADMINISTRATOR:

REBECCA ALBERT VOLLRATH
 Director of Career & Technical Education
 Weld RE-5J School District
 Phone: 970-776-0325
 Email: rebecca.albert@weldre5j.org

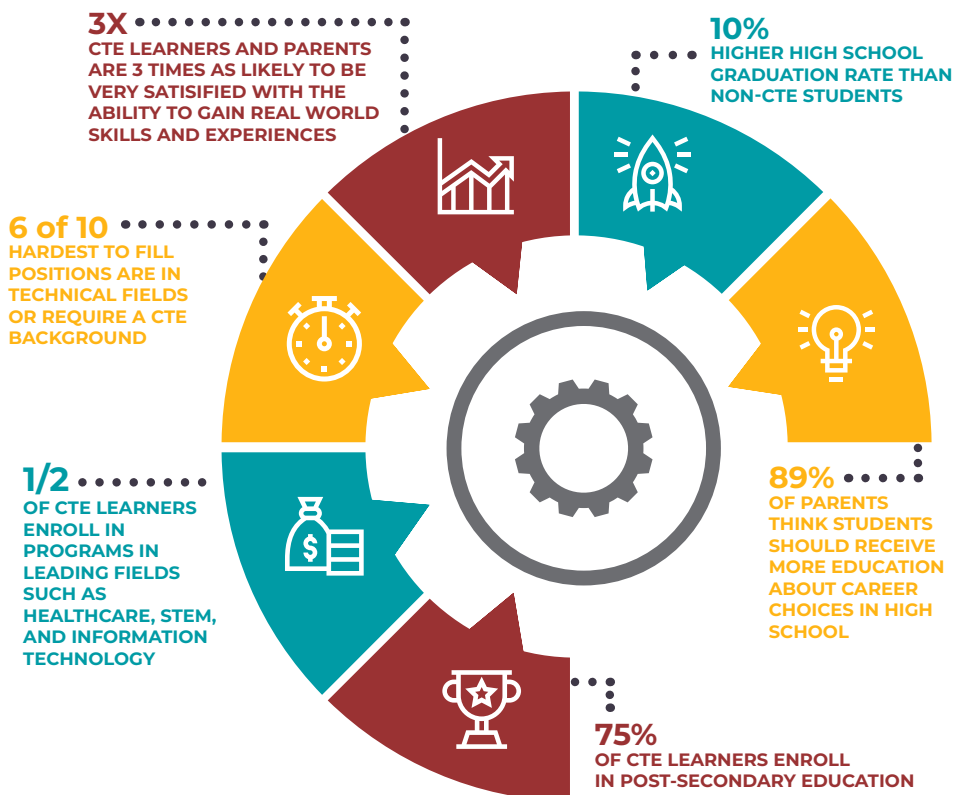
DAVID BENSON
 Principal
 Roosevelt High School
 Phone: 970-587-6008
 Email: david.benson@weldre5j.org

ASPEN SANDERS
 Principal
 Milliken Middle School
 Phone: 970-587-6304
 Email: aspen.sanders@weldre5j.org



CTE BY THE NUMBERS

CTE PROVIDES AN ACADEMIC FOUNDATION, TECHNICAL SKILLS, AND HANDS-ON EXPERIENCE TO GET LEARNERS READY FOR THE REAL WORLD.



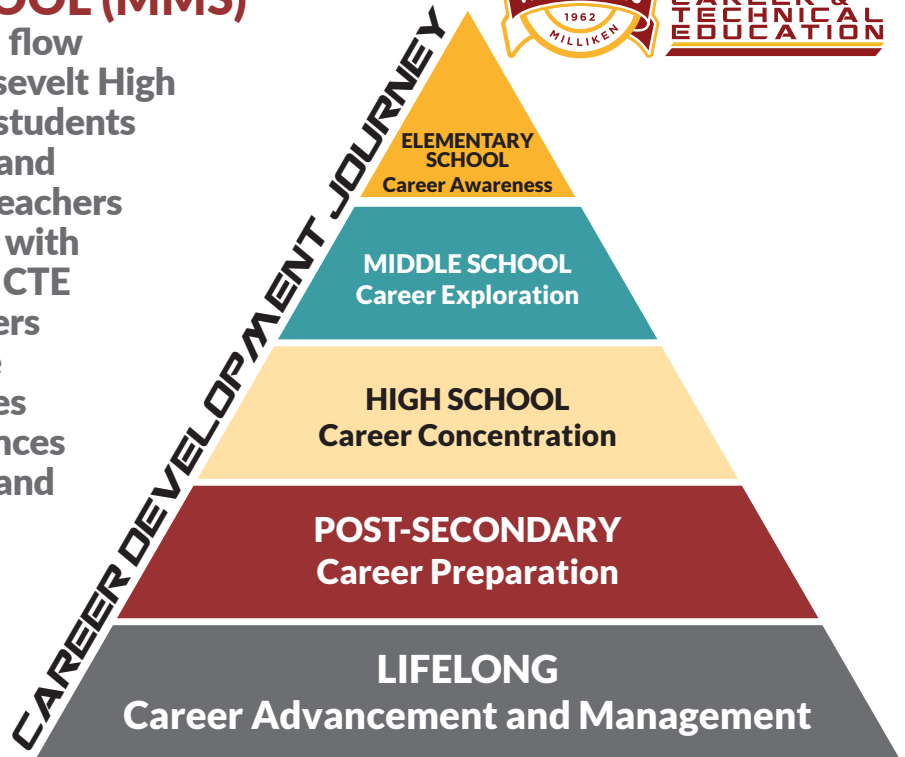
BASED ON A NATIONAL STUDY

DID YOU KNOW?

CTE students can earn college credits, obtain industry certificates, and gain work experience while still in high school.

EXPLORE CAREER INTERESTS AT MILLIKEN MIDDLE SCHOOL (MMS)

CTE exploratory courses at MMS flow seamlessly into Pathways at Roosevelt High School (RHS). Eighth-grade CTE students at MMS explore career interests and possibilities, learn directly from teachers and students at RHS, and engage with industry professionals. Starting a CTE Pathway in 8th grade gives learners a jump-start on high school while providing leadership opportunities through competitions at conferences and other involvement in Career and Technical Student Organizations.



2023-2024 CTE COURSE OFFERINGS INCLUDE:

- Intro to Agriculture
- Intro to Business
- Culinary Nutrition
- Computer Science Foundations (Coding)
- Principles of Construction
- Principles of Engineering and Technology

Students at MMS can begin CTE Pathways before they enter high school!

CONTACT:

ASPEN CAVILLO, PRINCIPAL

Milliken Middle School

Phone: 970-587-6304

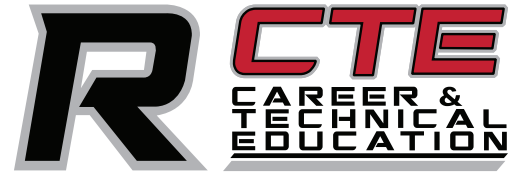
Email: aspen.cavillo@weldre5j.org

www.weldre5j.k12.co.us/cte





ROOSEVELT
ROUGH RIDERS



CTE STUDENTS AT RHS CAN SAVE MONEY AND GET A HEAD START ON FURTHER EDUCATION AND CAREERS

Roosevelt High School students have multiple opportunities to develop valuable skills while gaining work experience, college credits, and industry certificates while still in high school. These options can save on college tuition costs while enabling students to reach their goals faster.

ELIGIBILITY

Any current 9-12 grade students may register for CTE courses offered at Roosevelt High School.

COST

There are no tuition costs. However, some classes require a small fee and/or specialized materials.

GRADUATION REQUIREMENTS

A minimum of 1.0 CTE credit is required to graduate from Roosevelt High School.

EARN COLLEGE CREDITS IN HIGH SCHOOL

DUAL AND CONCURRENT ENROLLMENT

RHS has established partnerships with both Aims Community College and the University of Northern Colorado. Through these partnerships, we are able to offer our students college-level courses on the RHS campus or within the community. These courses enable students to earn high school credit as well as college credit toward a degree program.

For every college course, a student will earn .5 credit at RHS. Students taking classes with Aims and/or UNC are responsible for the administration fee as well as books depending on the course. RHS will cover the cost of tuition for students who, following RHS guidelines, enroll in and complete a college course at Aims or UNC with a grade of 'C' or better. Students may also request to take coursework through other institutions of higher learning.

AIMS CAREER ACADEMY

Eligible students can apply to participate in the Aims Community College Career Academy program which enables high school students to take college courses in the participating CTE programs. This is a concurrent-enrollment program where students earn credits toward high school graduation and college credits at the same time. All college fees are paid for by the school district. The student is responsible for transportation to the college campus.

EARN INDUSTRY CERTIFICATES IN HIGH SCHOOL

The process of earning an industry certificate enables students to experience the real-world demands of work in a practical way. Nationally recognized industry certificates can increase job prospects, marketability to employers, and employability as well as options for post-secondary education.

ENGAGE IN CTE STUDENT ORGANIZATIONS (CTSOs)

All CTE students at RHS have the opportunity to join a CTSSO related to their pathway. CTSSOs provide opportunities for students to compete at conferences, develop leadership skills, and gain industry insights. According to the Association for Career and Technical Education, "CTSSOs play an important part in preparing young people to become productive citizens and to assume roles of leadership in their communities. These organizations provide a unique program of career and leadership development, motivation, and recognition for secondary and post-secondary students."

ROOSEVELT HIGH SCHOOL CAREER & TECHNICAL EDUCATION (CTE) PROGRAMMING GIVES ALL STUDENTS A COMPETITIVE ADVANTAGE AS THEY ENTER COLLEGE, CAREER, OR THE MILITARY.

STUDENTS IN CTE PATHWAYS:

Explore opportunities that prepare them for high-demand careers and give them an edge entering college.

Engage in authentic, hands-on learning.

Equip themselves with relevant, rigorous, and practical skills.

CAREER AND TECHNICAL EDUCATION PATHWAYS

Our CTE Pathways are designed to ensure our students meet post-secondary and Workforce Readiness competencies and are ready to transition to further their education or enter the workforce. Industry level certificates are offered in each CTE pathway.

2023-2024 PATHWAYS AT RHS:

Agri Business
Animal Science
Plant Science
Power Structure and Tech
Business Administration
Coding
CNA *opening in 2024
Cyber Security *opening in 2024

Aims Criminal Justice
Engineering and Tech
General Construction
Digital Media and Communications
Design and Multimedia
Hospitality and Food Production
Human Services and Training
Health Science/Athletic Training

WORK-BASED LEARNING OPPORTUNITIES:

● Internships ● Mentorships ● Entrepreneur Projects

Career preparatory opportunities for Weld RE-5J students are continually expanding based on student interests and industry trends.

CONTACT:

DAVID BENSON PRINCIPAL

Roosevelt High School

Phone: 970-587-6008

Email: david.benson@weldre5j.org

www.weldre5j.k12.co.us/cte





READY FOR THE FUTURE
>>>

Career & Technical Education (CTE) is an educational option that provides learners with the knowledge and skills they need to be prepared for college and careers. It gives purpose to learning by emphasizing real-world skills and practical knowledge within a selected career focus.

CTE DELIVERS an Authentic High School Experience with More Value for Students



EXPLORE MORE: www.weldre5j.k12.co.us/cte

CTE LEARNERS
Explore careers to find their passion
Have more options for career and college success
Gain real-world skills



Weld RE-5J School District
110 S Centennial Drive, Suite A | Milliken, CO 80543
Questions? Call (970) 587-6050
or email listen@weldre5j.org

